

CARES

3.0 Structure

3.1 Participating Partners

Centered at Ridgetown Campus, CARES will involve faculty from several university departments and regional campuses. In addition, CARES may involve faculty or personnel from other universities or external bodies including government agencies and private sector partners.

The following groups are, or will likely, participate or be strategically linked with CARES.

Academic:

Internal:

- various departments (e.g. Land Resource Science, Environmental Biology, Plant Agriculture, College of Physical and Engineering Sciences, Applied Plant Science and Food, Agricultural and Resource Economics) working on CARES projects at Alfred, Guelph, Kemptville, and Ridgetown Campuses
- Centre for Bioproduct Discovery and Development
- alliances with other strategically linked internal projects and initiatives

Regional:

- St. Clair College, Lambton College, University of Windsor, University of Western Ontario, University of Waterloo

National:

- Three additional nodes of CARES: OLDS College, Alberta; Alma College, Quebec; Nova Scotia Agricultural College, Nova Scotia

Business and Organizations:

- Regional: Chatham-Kent Energy, Southwestern Ontario Bioproducts Innovation Network, AGRIS Co-operative Ltd, Ag Energy Co-operative, Renewable Energy Systems Inc and other business partners,
- Provincial: Ontario Field Crop Coalition, Ontario Federation of Agriculture, Christian Farmers Federation of Ontario, other commodity organizations, automotive, energy, greenhouse, and petrochemical industries
- National: Canadian Federation of Agriculture, Canadian Pork Council and other national commodity organizations

Government:

- Regional: Municipality of Chatham-Kent, conservation authorities
- Provincial: OMAFRA, Ministry of the Environment
- National: Agriculture and Agri-Food Canada, Natural Resources Canada, Environment Canada, Industry Canada, non-governmental organizations

3.2 Board of Directors

A Board of Directors is comprised of members from government, industry and the University of Guelph. The Executive Director considers advice from an advisory committee and takes direction from the Board of Directors (Figure 1). The initial composition of the Board will consist of representatives from:

- Ontario Ministry of Agriculture, Food and Rural Affairs (*Advisory*) – Director of the Research and Innovation Branch and Gabrielle Ferguson, Environmental Programs Specialist

- Municipality of Chatham-Kent, Economic Development Services – Kim Cooper, Acting Agricultural Co-ordinator, Economic Development Services
- Southern Ontario BioProducts Innovation Network – Matt McLean, Executive Director
- Ag Energy Co-operative Ltd. – Mike Bouk, Executive Director
- Cedarline Farms – Greg Devries, Owner/Producer
- The Research Park – Don Hewson, Managing Director, The Bioindustrial Innovation Centre and Industrial Liaison
- Ontario Agricultural College, University of Guelph – Robert Gordon, Dean of OAC
- Natural Resources Canada – Claude Faucher, Manager, Renewables Integration & Assessment
- Olds College, Alberta – Abimbola Abiola, Chair, School of Innovation
- University of Guelph, Ridgetown Campus – Art Schaafsma, Director

The *advisory* members act as advisors to the Executive Director and do not possess voting privileges. In addition to the advisory seats, nine positions exist on the Board of Directors. The Board of Directors will always include at least one representative from SOBIN.

Members of the Board of Directors will be appointed to a renewable term of four years. A director may be removed before expiration of his or her term via a resolution passed by at least two-thirds of the members of the Board of Directors. In the final year of the Board of Directors' term, the existing board will appoint a nominating committee. This nominating committee will put forward appropriate nominees for election or appointment to the new Board of Directors.

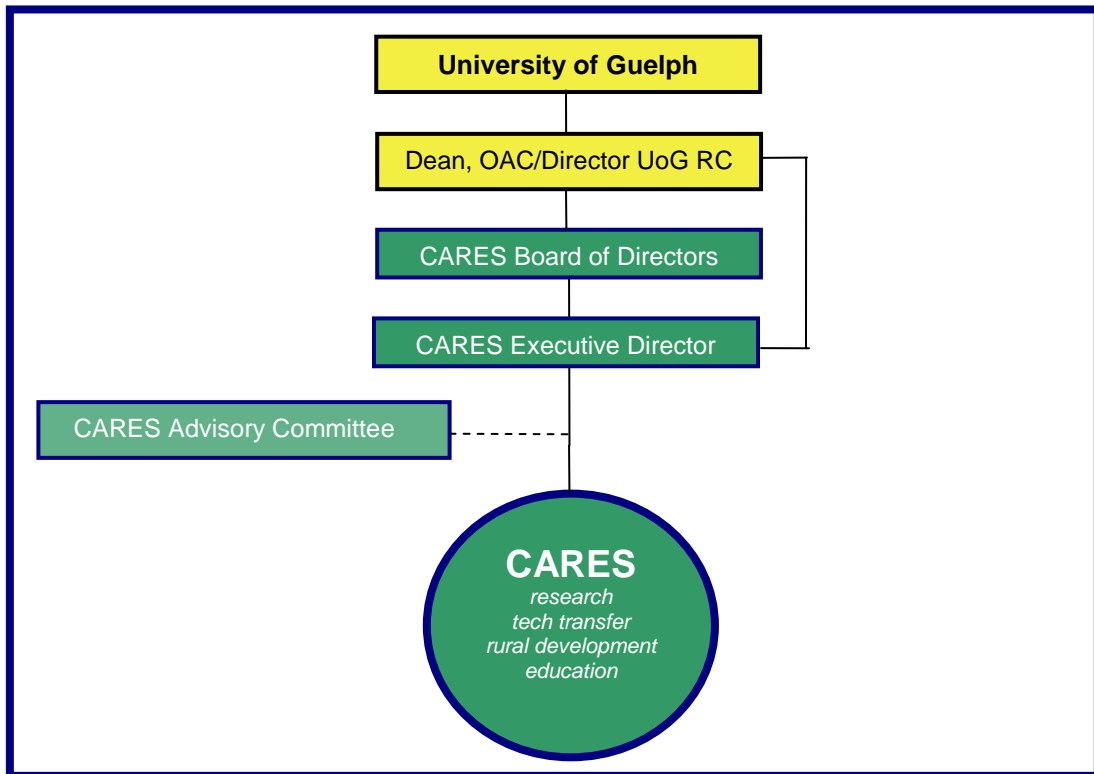


Figure 1: Structure and Governance of CARES

3.3 Advisory Committee

The Advisory Committee will consist of five members appointed by the Board of Directors based upon CARES initiatives to a two year term that is renewable. This committee will meet at least twice per year and report annually to the Executive Director. The Advisory Committee is responsible for providing feedback on research and technology transfer goals to the Executive Director and the Board of Directors. This committee will also provide recommendations on new research that is proposed to be completed within CARES. The Advisory Committee is composed of research scientists from the University of Guelph as well as other universities or research groups. In addition, membership may consist of end-users, stakeholders and technology providers.

3.4 Contracts, Memoranda of Understanding, Agreements

All types of agreements will comply with University of Guelph policies and practices.

3.5 Relationship to Ridgetown Campus

1. Allocation of space - CARES and its associated projects seek to make use of 15 acres of land situated on the Ridgetown Campus that has limited use for other applications. It will potentially be used for project within the mandate of CARES such as bioenergy crops, operation of anaerobic digesters and biofuels research (Appendix A). Approval from ARIO for use of infrastructure will be sought as CARES projects and initiatives unfold.
2. Use of facilities - Research labs, engineering shops, the feedmill and other on-campus facilities will be utilized as in-kind contributions from Ridgetown Campus towards CARES. CARES will be included in Ridgetown Campus' land use plan that is prepared on a regular basis.